

Open
the door.



Cottage IN THE
Meadow

A Home for Hospice Care
To serve the people of Central Washington.

Mission Statement

Memorial Hospice promotes and provides compassionate end-of-life care, meeting the medical, emotional, and spiritual needs of individuals and their families.

Hospice Care in Central Washington: It's All About Quality of Life

Hospice care reflects a unique philosophy in healthcare, focusing on comfort rather than cure for people with terminal illness. The person, not the disease, is the center of attention.

Hospice provides quality of life for the patient for whatever time remains, meeting not only their physical needs, but their spiritual and emotional needs as well, and addressing the issues and concerns of the family, too.

To fulfill this mission, an interdisciplinary team—physician, nurse, hospice aide, social worker, volunteer, and chaplain—is available to the patient and family. The team focuses on eliminating pain and discomfort, and addressing spiritual, emotional, and practical matters to help make the time as peaceful as possible for all concerned.

What is Cottage in the Meadow?

Cottage in the Meadow will be a safe and peaceful home-away-from-home for patients and their families. A professional staff will provide comfort care and other hospice services 24 hours a day, 7 days a week, for patients unable to stay at home. Each patient will have a private bedroom and accommodations for a family member. The entire house and grounds and all policies are designed to provide a professional, family-friendly environment in which to receive the care and support needed during a terminal illness. *Cottage in the Meadow* will be open to any patient meeting hospice criteria.

Quality of Life

We Already Have Wonderful Hospice Care. Why Do We Need *Cottage in the Meadow*?



Many times, managing a patient's care in the home becomes difficult or impossible, and *Cottage in the Meadow* is the ideal solution for the patient and caregivers.

For example, there are times when more symptom control and pain management is needed than can be provided at home. These are the times when a short inpatient stay at *Cottage in the Meadow* is called for, to stabilize the condition so the patient can return home.

At other times, a person can no longer manage safely at home, or no longer has a caregiver living at home. Residential care would provide this service at the hospice care facility.

Sometimes a caregiver can no longer bear the strain of caring for their loved one at home. These are times when a family needs respite care provided at a hospice care facility.

Building *Cottage in the Meadow* will enable Hospice to do an even better job of providing quality, compassionate, and appropriate care. It will provide an alternative for families whose options have become limited.

Cottage in the Meadow is the Ideal Solution...

...for a middle-aged woman whose closest living relatives are her daughter-in-law and her three young children. As much as the young woman wants to keep her mother-in-law at home and care for her there, it is a great responsibility for this young caregiver to shoulder alone. A homelike hospice facility would provide this family with an excellent alternative for either short-term inpatient care, or permanent residential care.

Caring

Hospice Care in Your Community

Since 1996, Memorial Hospice has been caring for people with terminal illness. Memorial Hospice is a Medicare-certified member of the Memorial Family of Services, which serves all Central Washington residents. It cooperates completely with three other fine hospice agencies serving our citizens: Lower Valley Hospice in Sunnyside, Regional Hospice in Yakima, and Kittitas Valley Hospice.

In the last 12 years, Memorial Hospice has cared for more than 3,900 patients and their families. More than half of this number have been served in the last five years alone.

In cooperation with the other hospice agencies, more than 4,000 patients and their families have been served in the last five years. As more and more people turn to hospice for help, it has become increasingly clear to the staff, volunteers, and community supporters that a home for hospice care is needed in Yakima. A place where those we love can be near family and friends when it matters most. A place where they can be cared for by a specially-trained and loving staff in a homelike setting.

A family's testimony

It was hard to relinquish her independence to her children, because she didn't want to be a burden to them. She eventually ended up in the hospital because her children were not able to be there enough to manage her pain.

A hospice house would have been a real blessing!



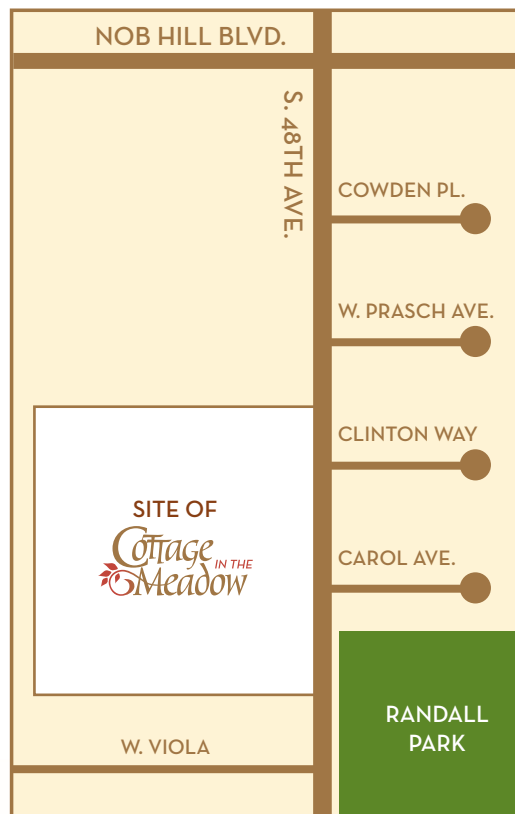
Compassion

Cottage IN THE Meadow For Our Community

To respond to this need, Memorial Hospice is building a 22,000-square-foot, 20-bed hospice care facility in two phases; 12 beds first and then another 8 beds later. *Cottage in the Meadow* will be located on 48th Avenue near Randall Park and south of Nob Hill Boulevard, in Yakima. This 5-acre site is easily accessible and will be located amidst a park-like location that offers a quiet and serene setting.

Cottage in the Meadow is designed to make patients and families feel at home. The private rooms are spacious and comfortable. Each has a private bath and an outdoor patio accessible through French doors. It is furnished and decorated to provide a comfortable homelike feeling. Each suite will enjoy a beautiful view of the lush landscaped grounds and soothing water features.

Family areas will provide cozy hospitality to loved ones. Visitors will be allowed around the clock, provided it is agreeable to the patient, and children and pets are welcome to visit as well. Each suite is equipped for a family member to stay overnight. All policies will support the hospice philosophy of family-centered care. There will be gardens, a chapel, meditation area, family living and dining rooms, and a children's play area.

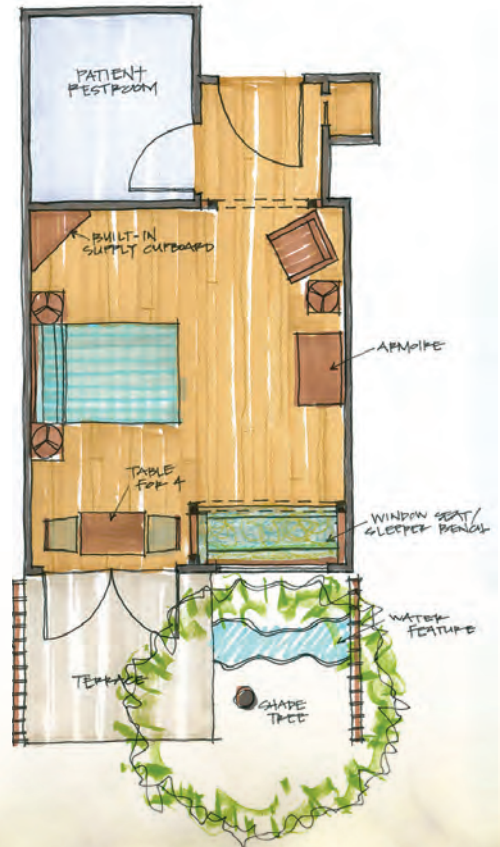
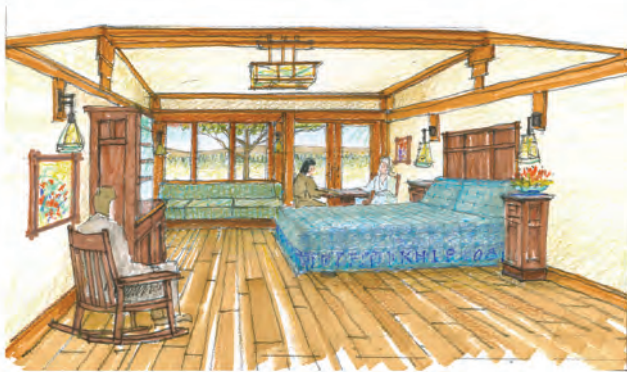
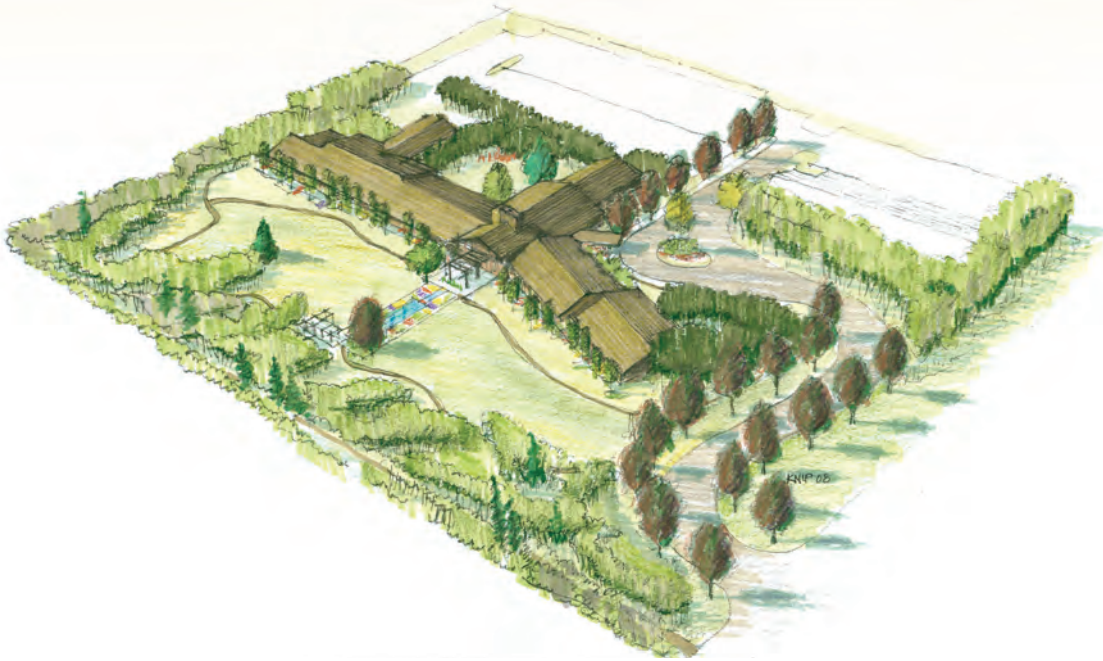


A chaplain laments

I was saddened to learn that one of our local families moved their loved one to Kennewick because they had a hospice house there. The patient near the end of life was moved from his local family, church, and support system because we didn't have a residential hospice care facility in Yakima.

Cottage IN THE Meadow

Architect's Renderings and Floor Plan



The Same Loving Care in a Different Setting

Cottage in the Meadow will offer a full range of hospice services, the same care we now offer in homes, assisted living facilities, and nursing homes to patients of all ages.

Physician Services. All patients at *Cottage in the Meadow* will continue to have their care managed by their own personal physician or the Hospice Medical Director.

Nursing Services. Nurses and hospice aides will be on duty 24/7 at *Cottage in the Meadow*. They will provide pain and symptom management, assistance with daily care, and frequent monitoring of the patient's physical condition. The nursing staff will also communicate regularly with the physician and family.

Social Work Services. End of life issues are extremely emotional for the patient and family members. A social worker will meet with them to listen to their concerns and need; help them sort through the many questions and feelings they have; and assist with financial concerns, caregiver issues, and funeral arrangements.

Spiritual Services. The chaplain provides spiritual and emotional support in coordination with the patient's own spiritual or religious advisors and beliefs.

Volunteer Services. Volunteers are a mainstay of the hospice team. At *Cottage in the Meadow*, they will provide patient companionship, support and relief for family members, and welcome and provide orientation for visitors.

Bereavement Services. Hospice bereavement staff and trained volunteers will provide emotional support for family members for a year after the death of the patient.

A hospice volunteer speaks

Hospice helps people who need care and I see grateful people over and over. Now comes the time for a special place like the hospice care facility that can help people be together as a family at the end of life.

Serving

Questions You May Have

How did you decide on 20 bedrooms?

We have been considering and researching this project for several years. A great deal of data was evaluated—industry standards, statistical projections, state guidelines, area demographics and more. We have also consulted with several other residential hospices. The result of our studies suggested a need for a 20-bed facility (the maximum size allowed in Washington State) for hospice care by 2010. After a public hearing, the state of Washington granted a Certificate of Need for the construction and sustainability of a 20-bed facility.

Why now?

The dramatic increase in the use of hospice services in Yakima County over the past several years made it clear that *now is the time* to build a hospice care facility. Increased usage of home hospice services over the last five years as well as the increase of inpatient hospice needs confirmed the need for *Cottage in the Meadow*.

Who will use Cottage in the Meadow?

Three different types of patients will stay at *Cottage in the Meadow*: those who need caregiver relief, who will usually return home after a short stay (respite care); those hospice patients who have come from home or the hospital for symptom management (inpatient care); and those who need a place to live and be cared for when home care is not possible (residential care).

Who will pay the day-to-day operating costs of Cottage in the Meadow?

Cottage in the Meadow will operate largely with reimbursements by Medicare, Medicaid, or private insurance for routine hospice services.

What if a person has no insurance and can't pay?

As always, Memorial Hospice will provide care regardless of a person's ability to pay. We will continue to rely on the community's generous financial support to meet these and other needs.

Will pets be allowed to visit?

Of course, as pets are such an important part of some people's lives.

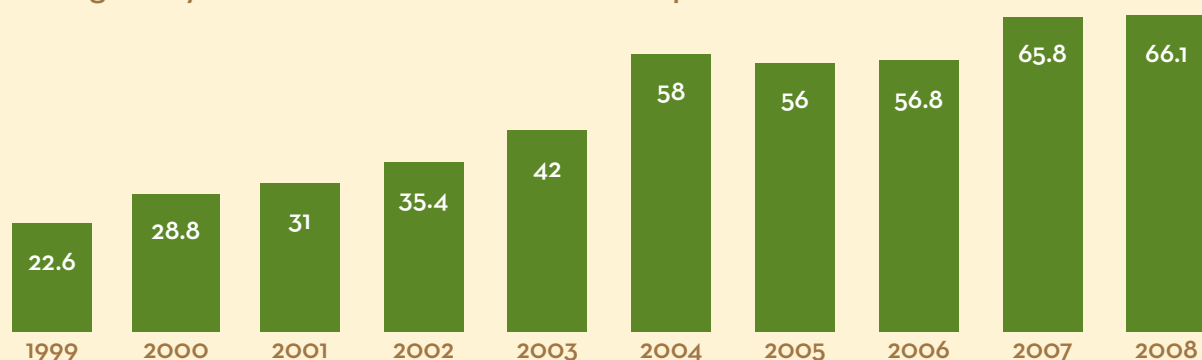
What about children?

Children of all ages will be encouraged to visit their loved ones and a play area will be available.

How was the site chosen for Cottage in the Meadow?

A local community-minded family sold the land at a discounted price so that *Cottage in the Meadow* could be built on this land. The site is a fairly flat piece of land, which will reduce construction costs. The proximity of Randall Park is ideal for visiting families.

Average Daily Patient Census for Memorial Hospice 1999-2008



Fairweather Million Dollar Challenge

The Fairweather Foundation has offered a \$1 Million gift as a challenge to raise an additional million dollars by December 31, 2010 in support of *Cottage in the Meadow*.

All new cash gifts over \$1,000 will be matched when they are paid to the Memorial Foundation for the “Cottage in the Meadow (Hospice Building Fund).”

Commemorative Gifts already committed include:

- The Fairweather Foundation
- Helen Jewett
- Bill & Joanne Almon
- In memory of Dorothea L. Carlton (patient suite)
- In memory of Herman Neubert (patient suite)
- Leslie Loudon Hospital Guild (children’s play room)
- Don Schaake Family
- In Memory of Annabelle & Arthur Glazer and Elizabeth & Walter Vornbrock
- Rick & Linda Linneweh (garden structure)
- In Memory of George & Florence Hall
- In Memory of Euclid & Leone Gamache
- In Memory of Victoria Myers

Named Giving Opportunities available include:

- Cottage Kitchen (\$150,000)
- Outdoor Courtyard & Water Feature (\$100,000)
- Sanctuary and Meditation Room (\$85,000)
- Family Kitchen (\$75,000)
- Patient Suites (18 rooms at \$60,000 each)
- Family Barbecue Area (\$50,000)
- Entry Area (\$40,000)
- Family Reading Area (\$35,000)
- Conference Room (\$35,000)
- Staff Offices (3 offices at \$25,000 each)
- Family Alcoves (2 alcoves at \$25,000 each)

Contact us for more information

Anne Caffery, CEO, The Memorial Foundation: (509) 576-5794
Mark Young, Hospice Development Director: (509) 574-3626
memfound.org

Grateful families speak

Words cannot adequately express our thanks to you for making Mother’s last days so much more comfortable and peaceful. You were not only a medical provider to her, but a friend as well. Thank you for the care you gave my Dad. He didn’t give praise easily and when he said, as he often did, that you did more for him than anyone, he meant it. And it was a high praise indeed. You and all of the other hospice staff kept Dad comfortable and helped him maintain his quality of life to the very end.

Commemorative Donor Recognition

Exciting commemorative donor recognition is being developed by the *Cottage in the Meadow* designers and the architecture team. Like the distinctive donor recognition found at Children's Village, contributors will be honored as a part of the environment of *Cottage in the Meadow*. Comments at Children's Village have been, "We feel like the community is giving us all a hug!" Donor names are integrated with the design elements to serve as an enhancement to the beauty of the interior and exterior spaces.

We envision the use of the stained glass, carved wood signage, engraved stone, and even etched lighting to achieve commemorative recognition placed prevalently throughout *Cottage in the Meadow*.



A carved wood frieze encircling the patient areas is one example of donor recognition to be beautifully integrated at *Cottage in the Meadow*.

Supporting



Capital Campaign Steering Committee

Tim Melhorn, M.D., Chair
Sandra Aguilar
Anne Caffery
Willette Cheatom
Diane Fleming
Barbara Smith Gilbert
Cal Groenenberg
David Helseth
Dennis Hogenson
Royal Keith
Carol M. Loudon
Carolyn Neiswender
Margaret Nutley
Mary Jo Perez
Doug Rich
Cathy Robinson
Paul Schaake
John Vornbrock
Gail Weaver
Raymalee Wilsey
Mark Young, Secretary

Who to Contact at Hospice and The Memorial Foundation

Please contact one of the following persons who will gladly attend to your request:

Mark Young, Hospice Development Director
(509) 574-3626
mark.young@memfound.org

Anne Caffery, CEO
The Memorial Foundation
(509) 576-5794
anne@memfound.org